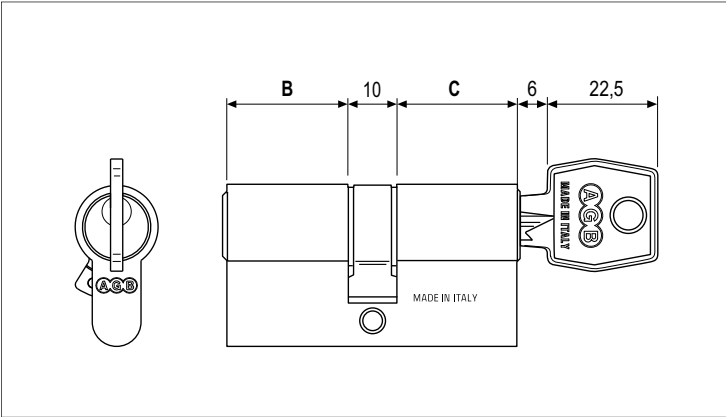
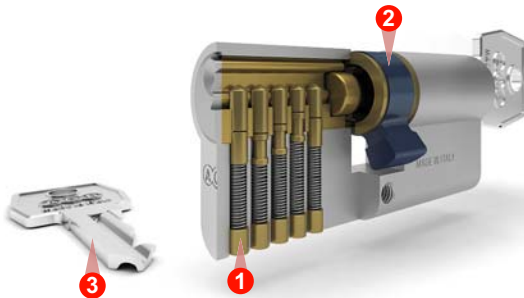


Mod. 600, key - key with anti-pull cam



Characteristics

- Brass cylinder with key.
- Designed on the basis of the third intrinsic security class according with the regulation EN 1303.
- 4 or 5 pins in brass for the coding. **1**
- Anti-pull cam in sintered steel (23° inclination). **2**
- 3 profiled brass keys. **3**



**Cylinder classification**

EN 1303:2015 - ICIM 0039CS							
1	6	0	B	0	C	3	0

ANTI-PICKING: Pass

**Note.** The product certifications ICIM are available at the website [www.agb.it](http://www.agb.it)

**Note.** For further information, see the introduction called "Comparative table of cylinders according with the regulations EN 1303 and EN 1627" in the cylinders technical catalogue.

**Cylinder choice guide**

Antiburglar						
Systems						
Durability						
Finish						

**Note.** For further information, see the introduction called "Cylinder choice guide" in the cylinders technical catalogue.

Plain brass - anti pull, key - key

Article	Pins	B	C
C60301.XX.XX	4-5	XX	XX

Plain brass - anti pull, key - key, version with ground lever

Article	B	C
C61901.XX.XX	XX	XX

**Note.** Refer to the price list in force to check the availability of measures and special finishes on demand.