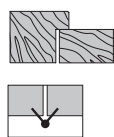


# Eclipse 3.2 and Eclipse 3.2 HD - adjustable concealed hinge for flush doors with or without rebate and aluminium doors



## Description

Reversible concealed hinge with a frame part reduced to 21 mm. Eclipse 3.2 is adjustable on 3 axis and allows a 180° opening. It is suitable for flush doors, with and without rebate and aluminium doors. The hinge can be used with the door closer. Possibility to install both flush covers and coverplates.



## Capacity

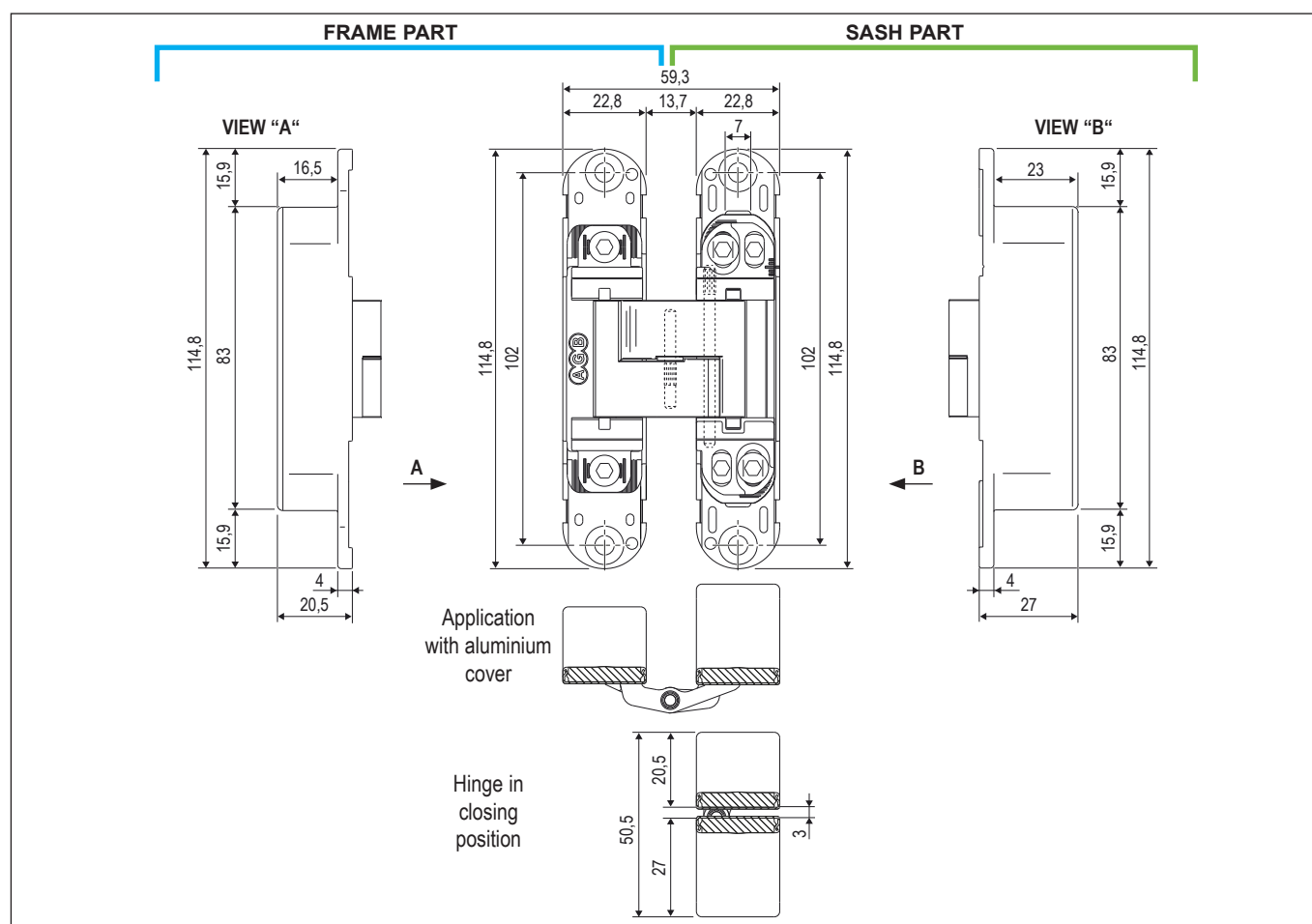
**Eclipse 3.2:** up to 40 kg with 2 hinges, 60 kg with 3 hinges;

**Eclipse 3.2 HD:** up to 60 kg with 2 hinges, 80 kg with 3 hinges.

**Note.** Follow the procedure on the capacity diagram for the maximum dimensions of the possible sash.

## Fastening

Mill sash and frame as indicated in the picture and fasten the hinge with  $\varnothing 4,5$  mm screws of a suitable length.



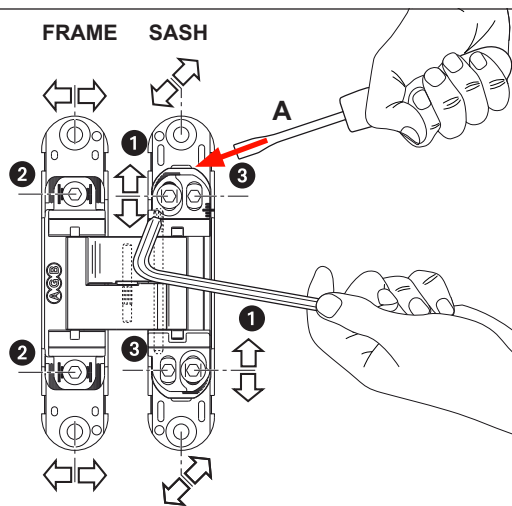
## Covers available



**Aluminium:**  
Art. E30200.16.XX

**Plastic material:**  
Art. E30200.45.XX

## FRAME SASH

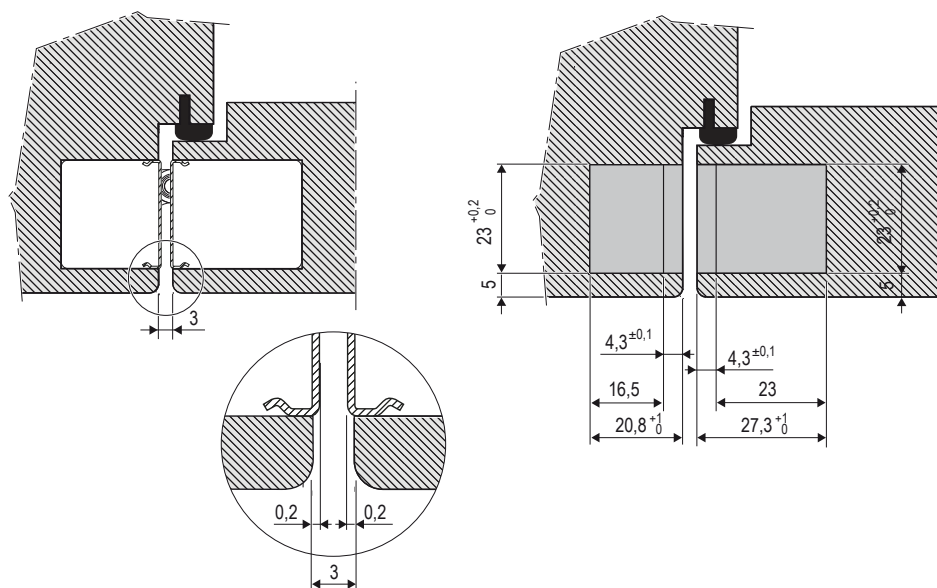
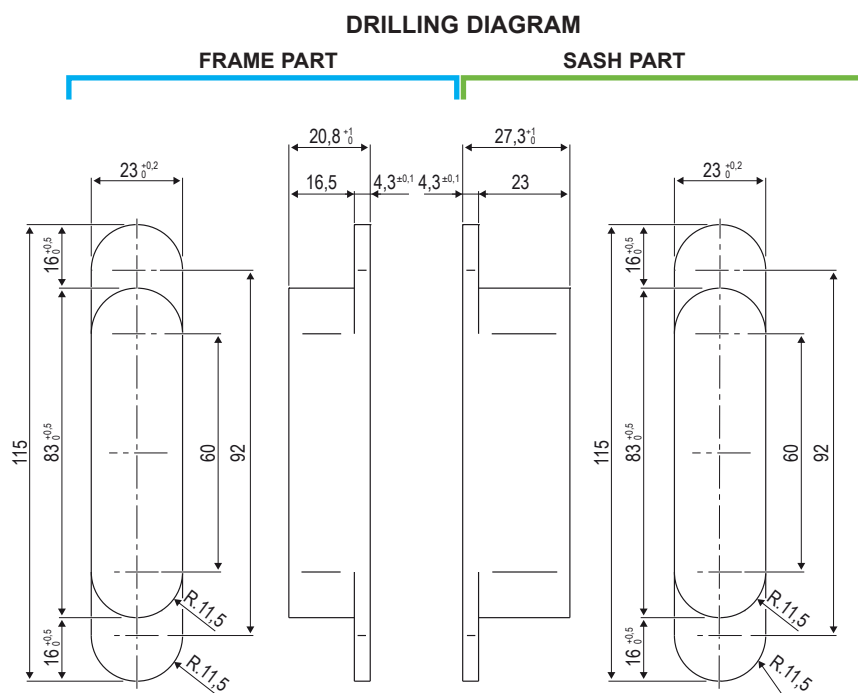


## Adjustments

Do the adjustments here below one at a time, with 3 mm Allen key:

- **±2 mm vertical adjustment:** loosen the screws ① using a screwdriver (A). After this operation fasten the screws.
- **±1 mm pressing adjustment:** loosen the screws ② and move the hinge body. After this operation fasten the screws.
- **±1,5 mm horizontal adjustment:** move the screws ③.

## Eclipse 3.2 and Eclipse 3.2 HD - adjustable concealed hinge for flush doors with or without rebate and aluminium doors



### Order specifications

Material	Article	Description
<b>ZAMAK</b>	E30200.06.XX	Eclipse 3.2 hinge
<b>STEEL</b>	E30200.61.XX	Eclipse 3.2 HD hinge

**Note.** Refer to the price list in force to check the availability of the finishes.